

**WELCOME**

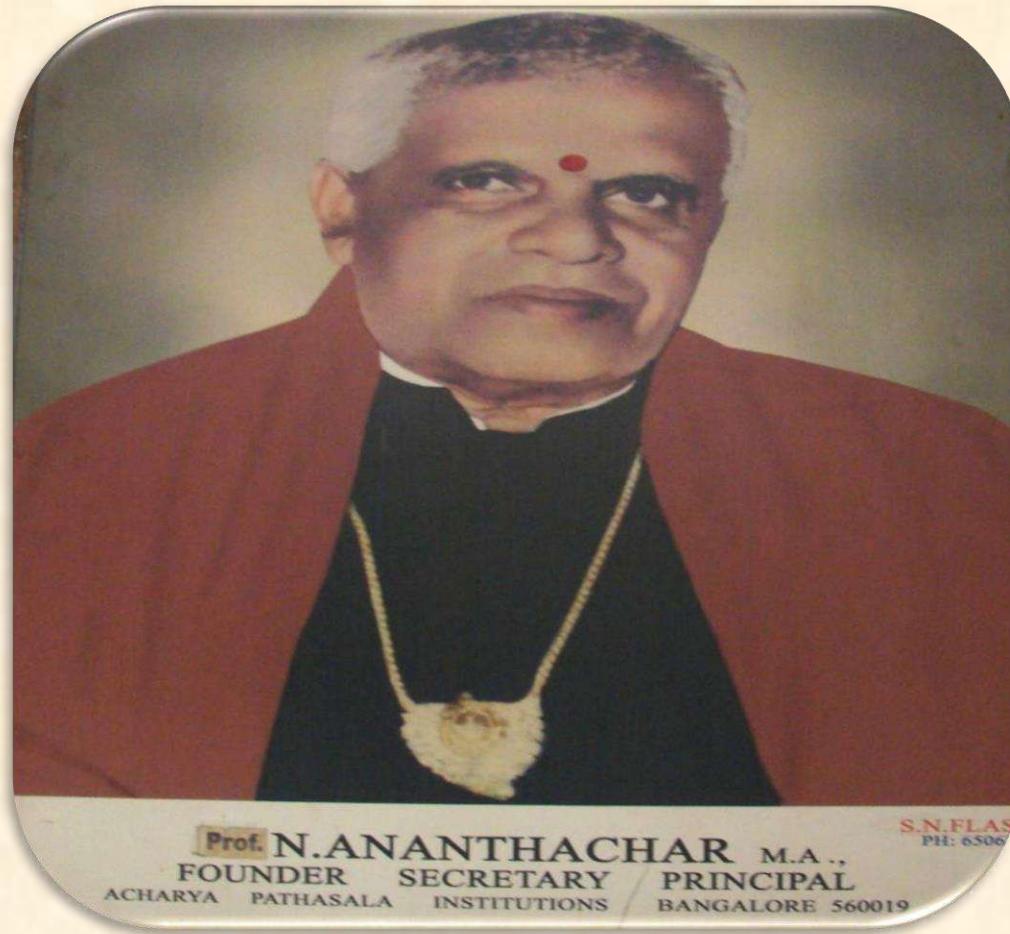
*TO*

**APS**

**GROUP OF INSTITUTION**

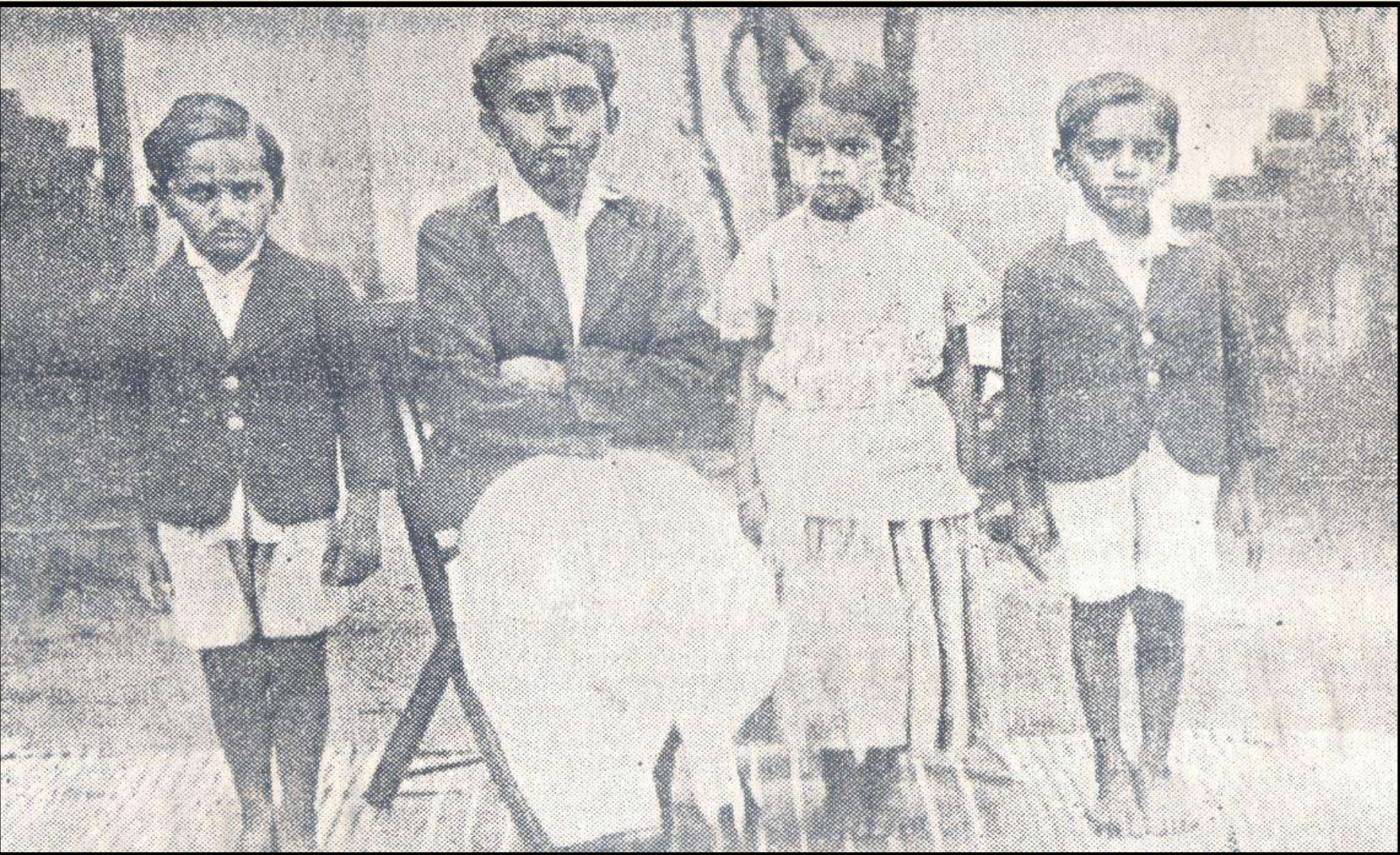
# *Acharya Devobhava*

*Through the life of our founder*





## FIRST BATCH OF STUDENT





## FOUNDATION STONE

ACHARYA PATHASALA

THIS FOUNDATION STONE

WAS LAID BY

RAJAMANTRAPRAVINA

N. MADHAVA RAO ESQ B A B L

DEWAN OF MYSORE

ON 27<sup>TH</sup> AUGUST 1941



*The honorable patrons who  
benevolently aided the remarkable  
growth of*

**ACHARYA PATASHALA**



**LATE. SRI. NAVARATHNA RAMA RAO**





**LATE. SRI B. M. SRINIVASIAH**





**LATE. SRI RAO SAHEB M. RAMA RAO**





***Zeal For Growth***

**LATE. SRI G. A. ACHARYA**



**Ex-President and Donor**



## **ENDLESS ENTHUSIASM**





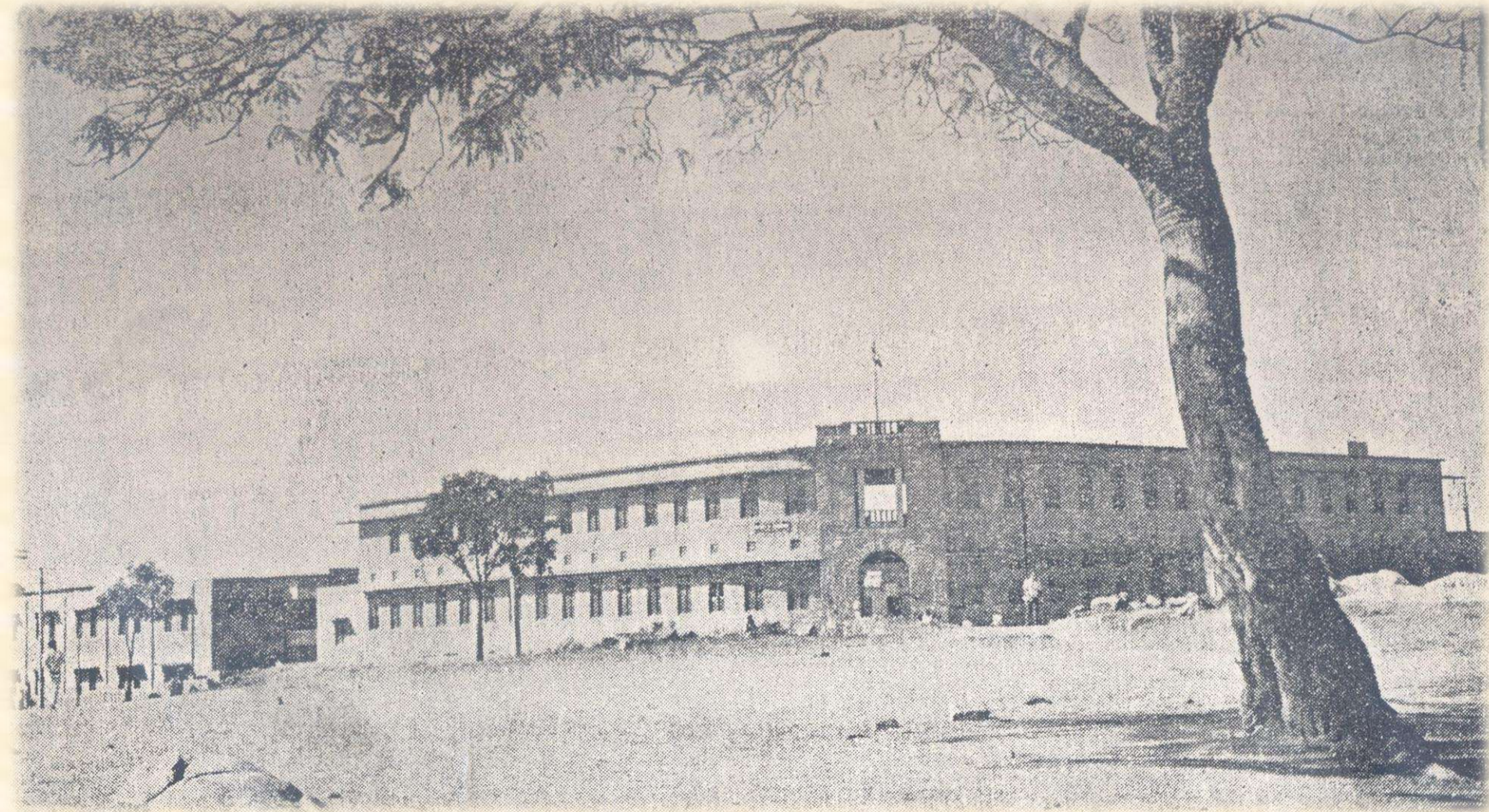
A  
VISIT  
TO OUR

**ACHARYA PATASHALA**

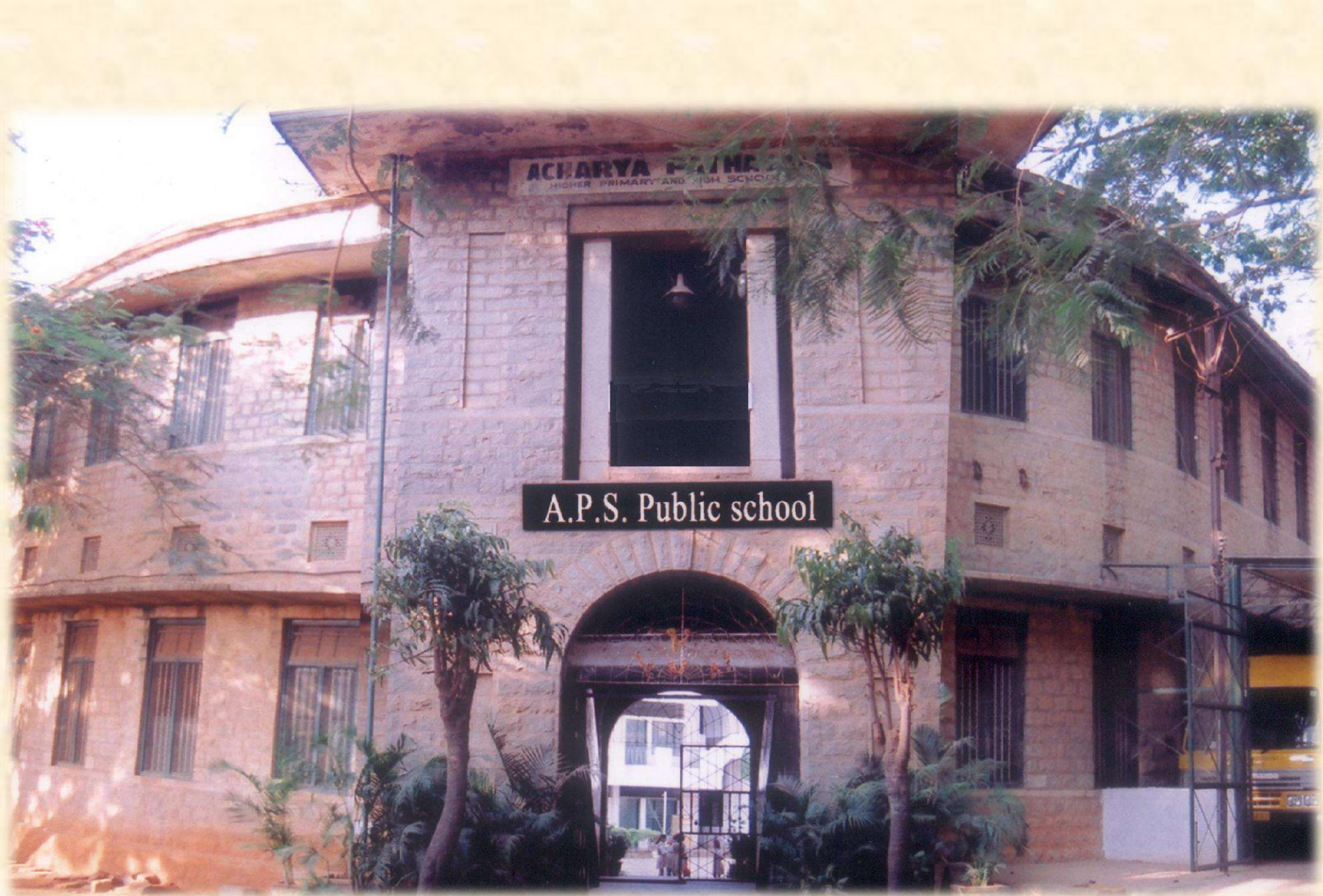
**GROUP OF INSTITUTIONS**



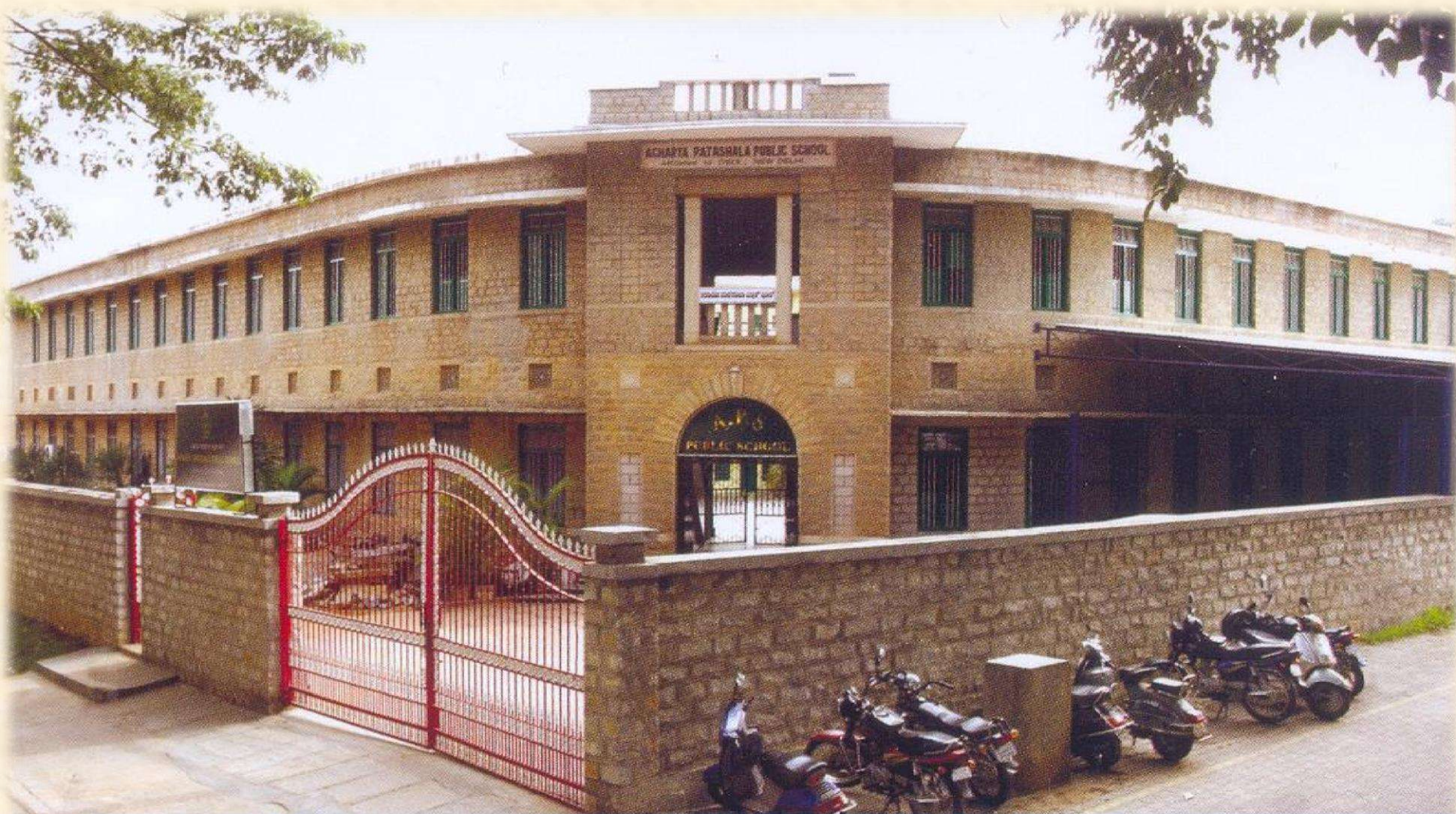
# **ACHARYA PATASHALA PUBLIC SCHOOL**





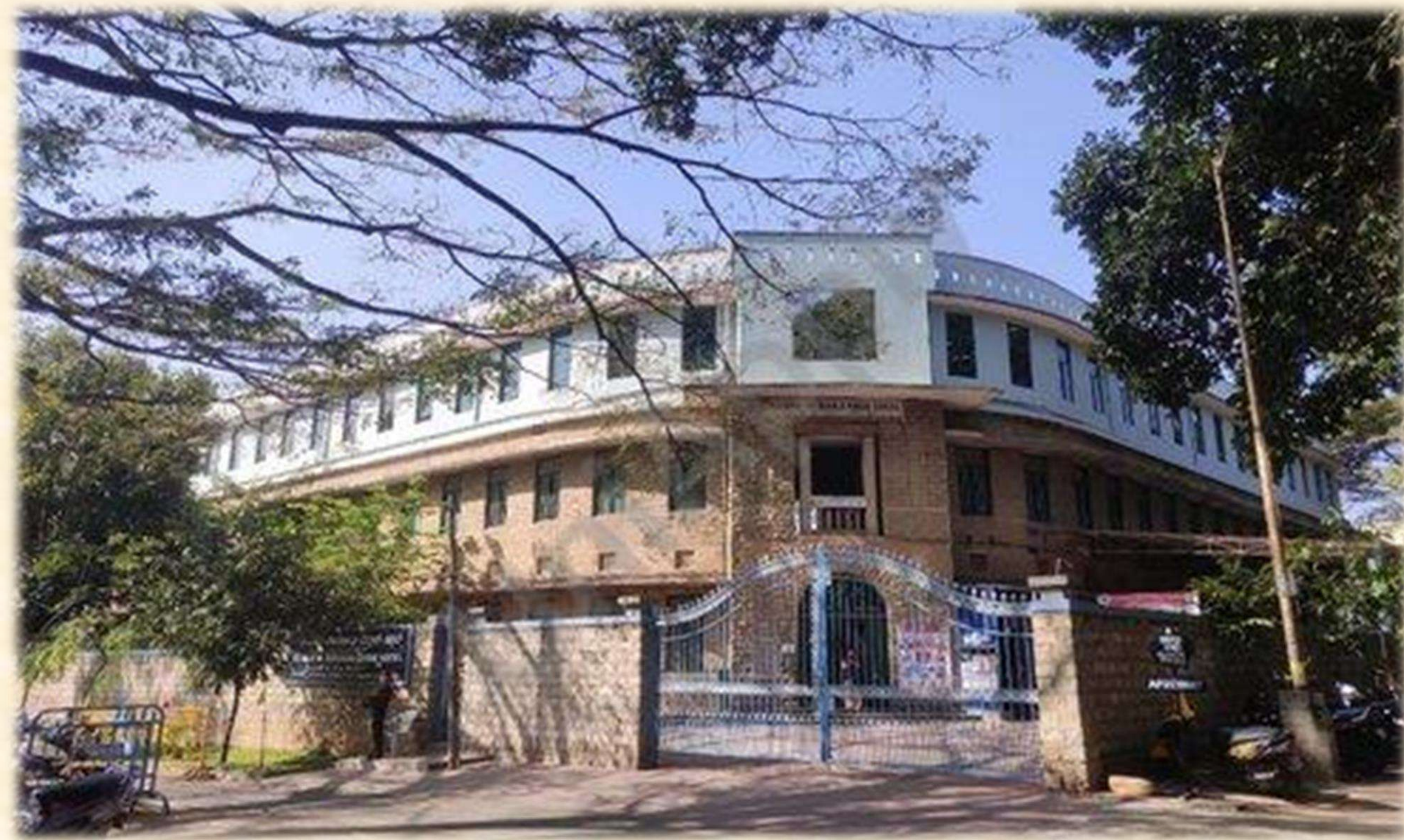






APS Public School











# ACHARYA PATASHALA HIGH SCHOOL



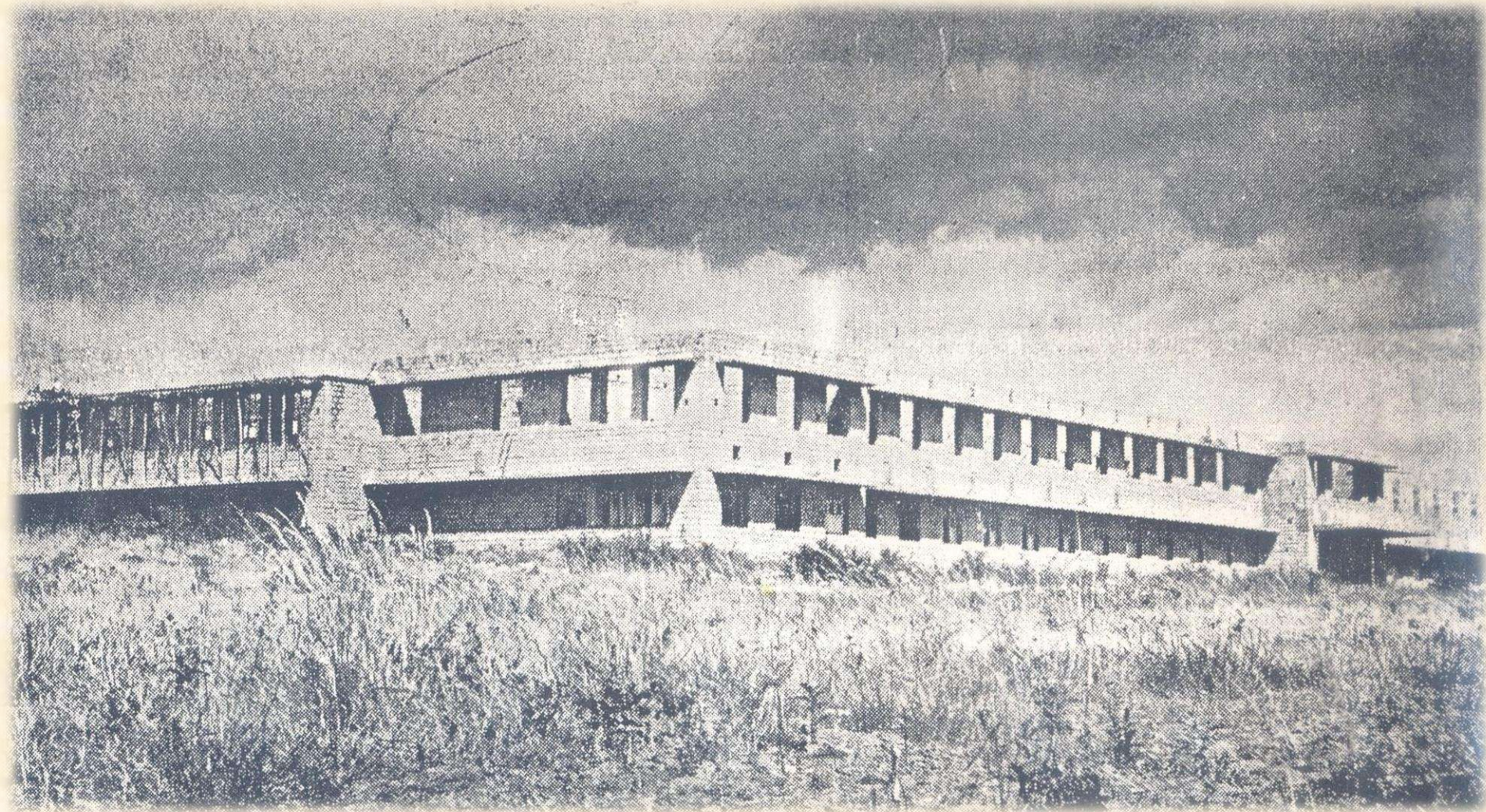




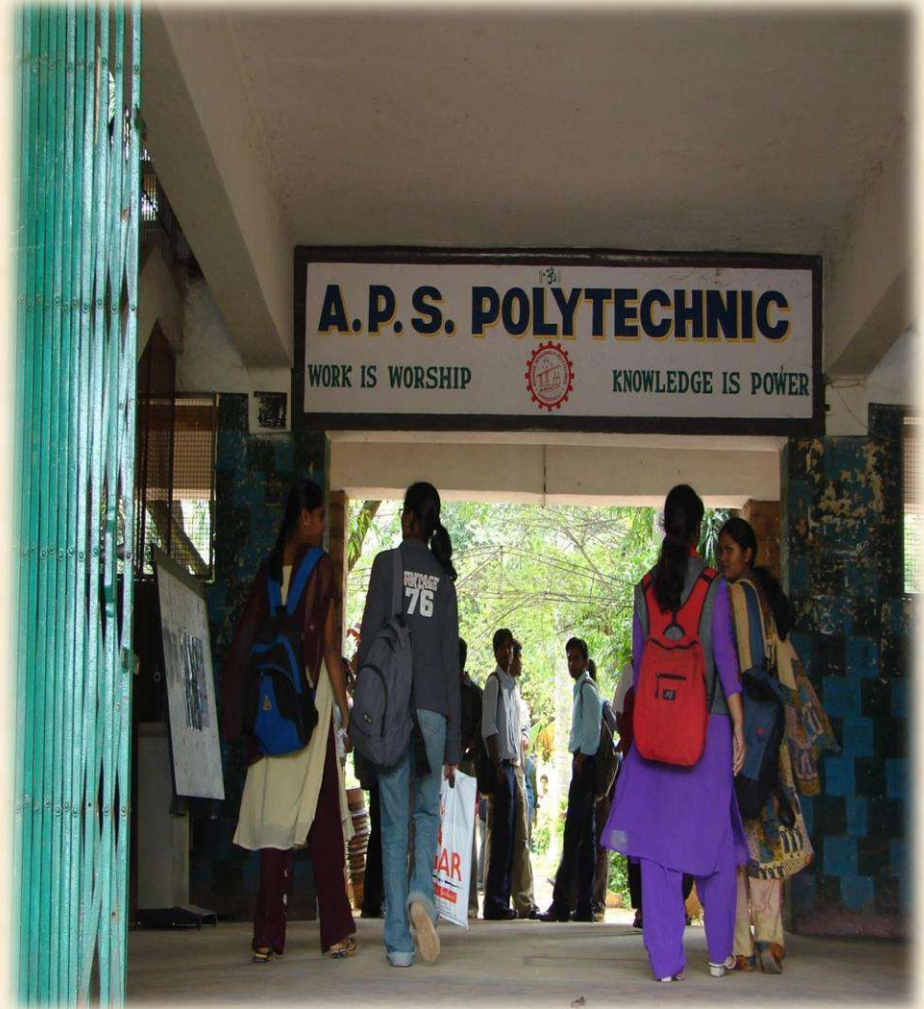
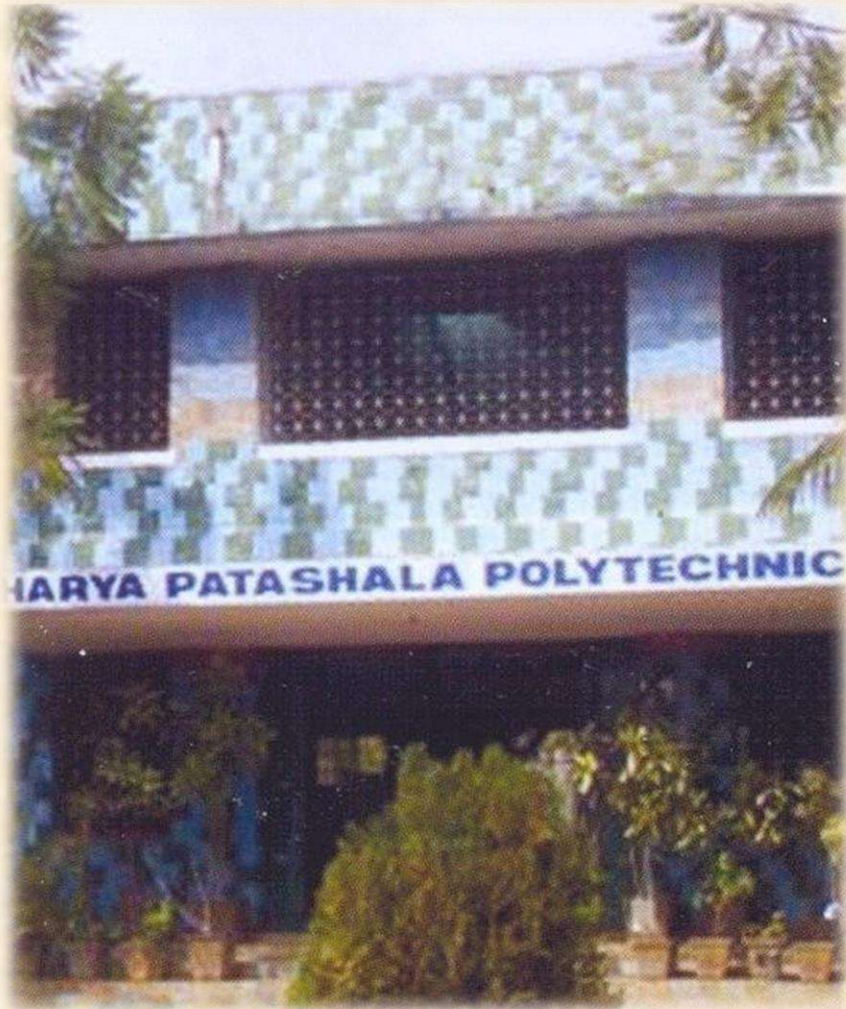


*Expanding Horizons*

**APS POLYTECHNIC, SOMANAHALLI**









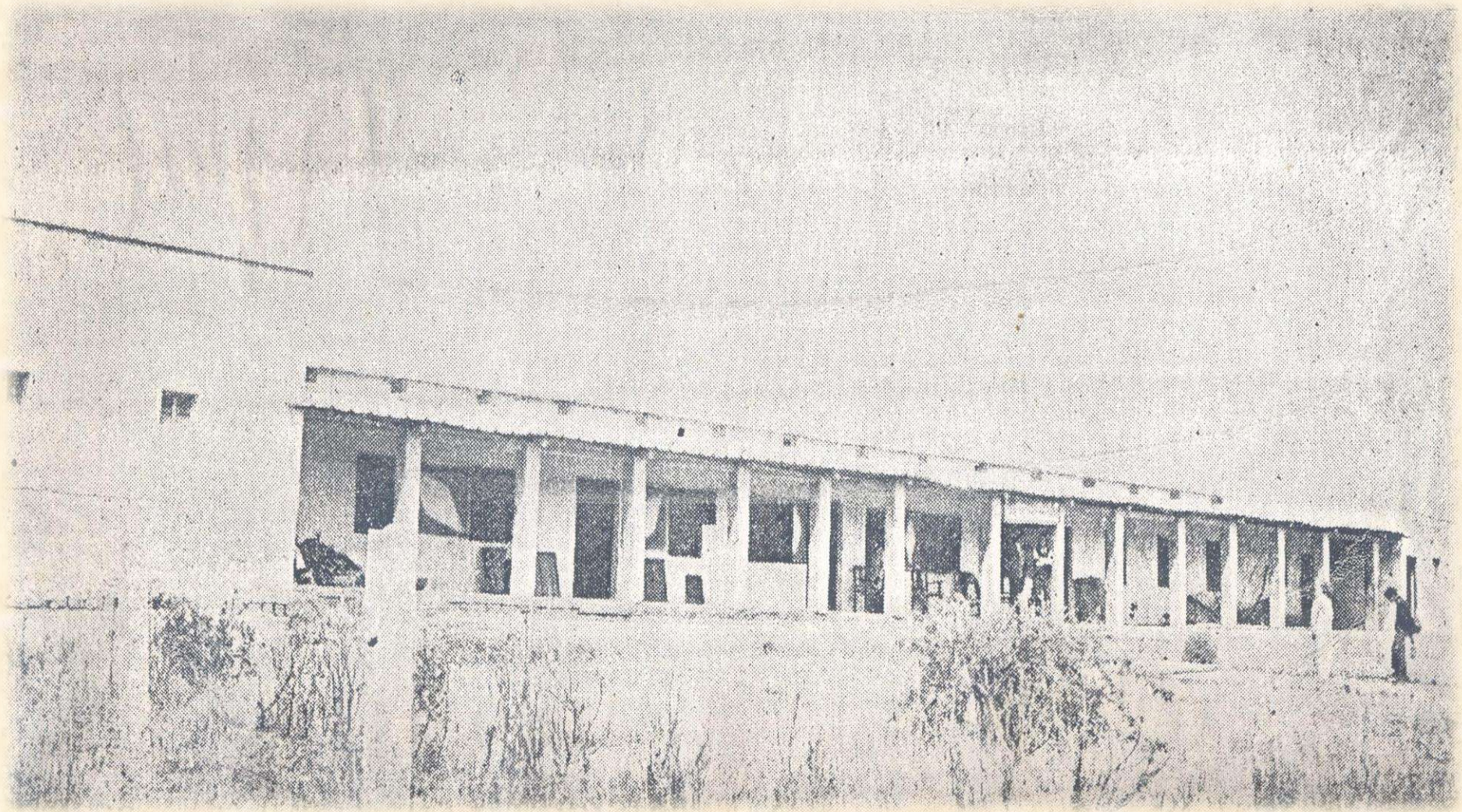
**ACHARYA PATASHALA POLYTECHNIC**





*Reaching Rural zones*

**APS RURAL HIGH SCHOOL, SOMANAHALLI**





ಆರೋಗ್ಯ ವಾಣಿಜ್ಯ ಗ್ರಾಮೀಣ ವೃದ್ಧಶಾಲೆ  
ಸೋಮನಹಳ್ಳಿ ಬೆಂಗಳೂರುದಕ್ಷಿಣ ತಾಲ್ಲೂಕು 560062









*Expanding wings into engineering*

**APS COLLEGE OF ENGINEERING, SOMANAHALLI**







వంశీ విద్యా సంస్థ, A.P.S. EDUCATIONAL TRUST  
పి.ఎ.ఎస్. ఎడ్యుకేషనల్ ట్రస్ట్  
**A.P.S. COLLEGE OF ENGINEERING**















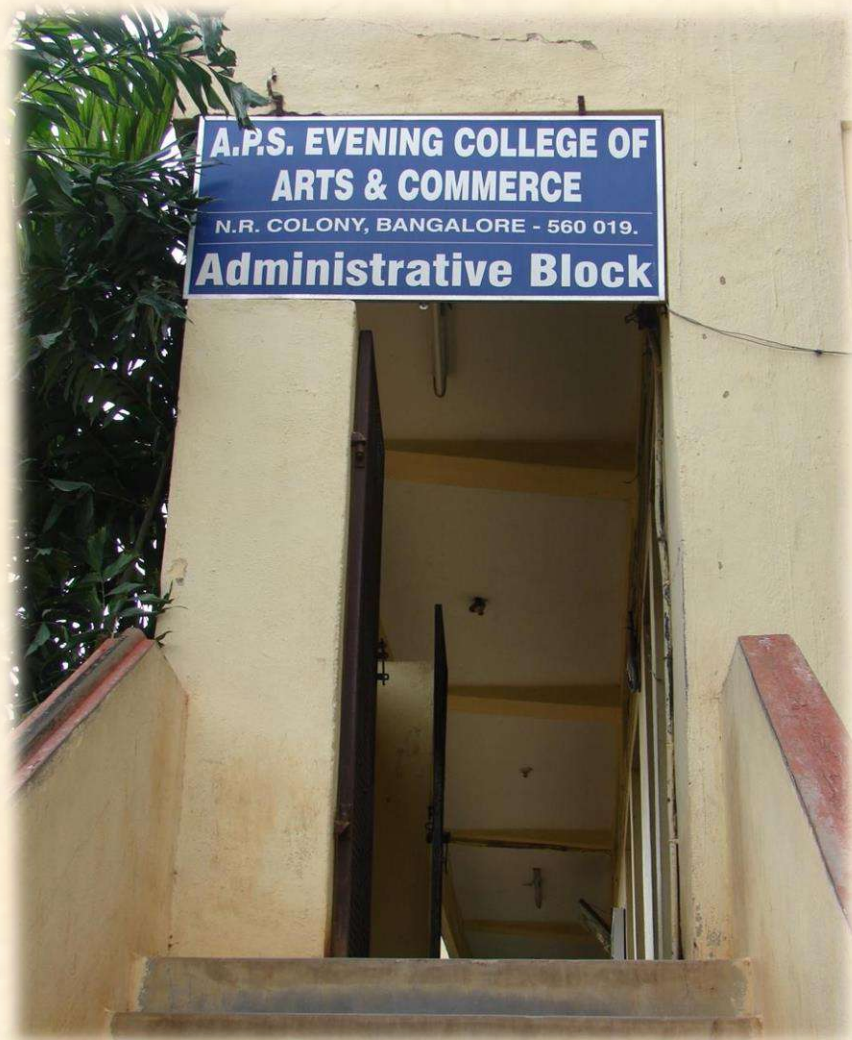
# **APS EVENING COLLEGE OF ARTS AND COMMERCE**













# APS COLLEGE OF ARTS AND SCIENCE









*An Raise into Technology*

## **PROF.N.ANATHACHAR MEMORIAL COMPUTER CENTER**









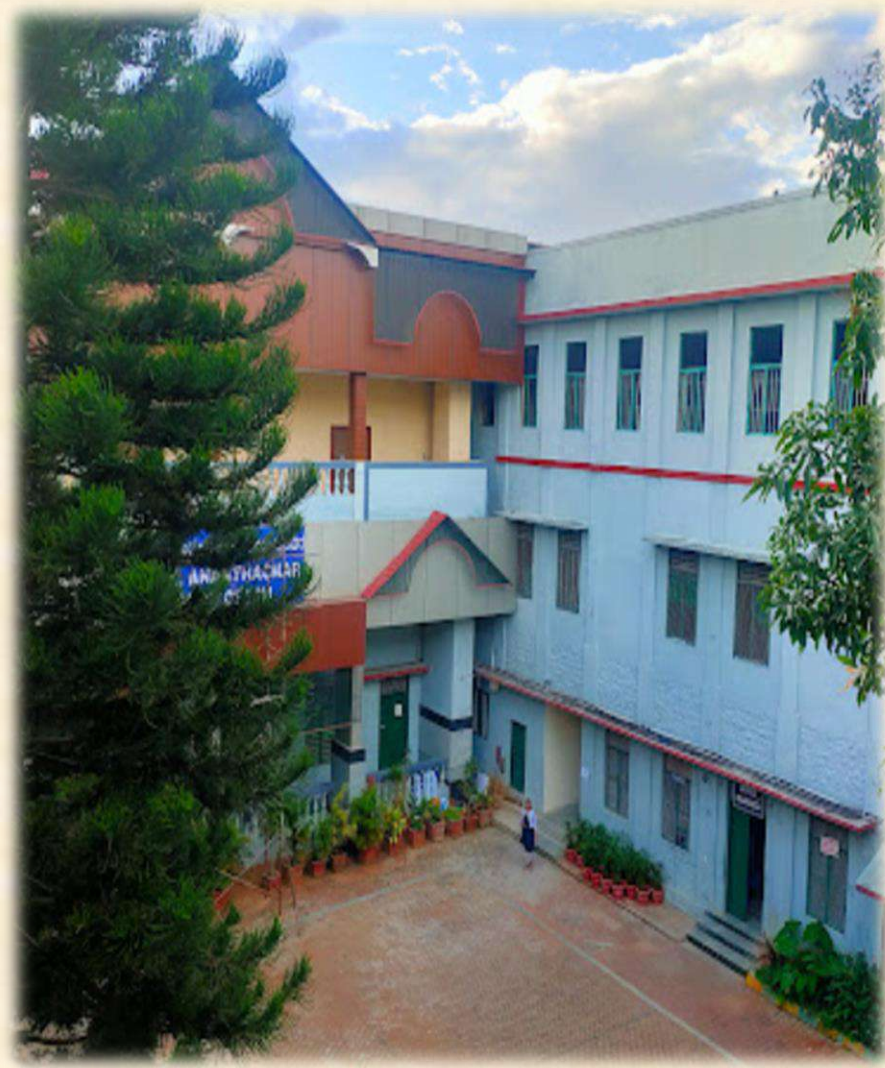
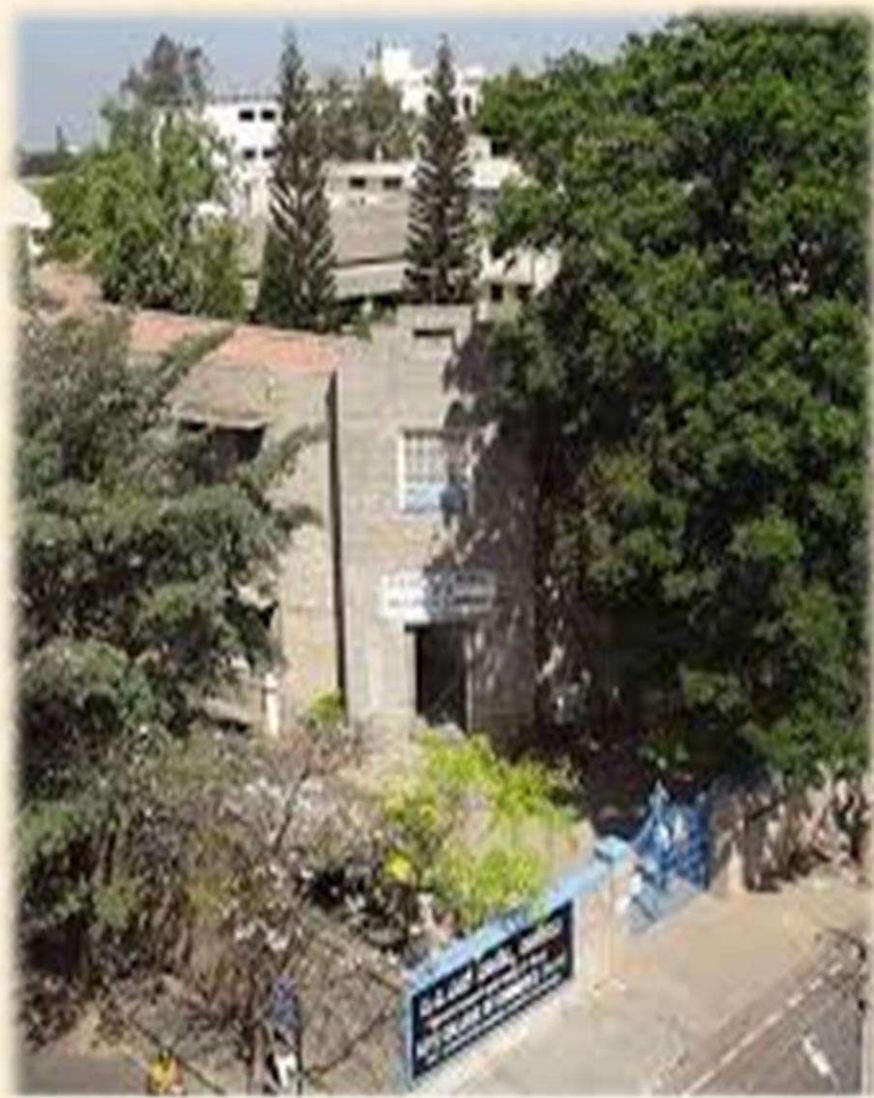




## A photograph of the exterior of Acharya Ratanbhai College of Commerce. The building is constructed from light-colored bricks. A prominent blue sign with white text is mounted above the entrance, displaying the college's name in both Marathi and English. To the left of the entrance, there is a brick pillar topped with a blue decorative element. A blue metal gate is visible on the right side of the frame, partially obscured by a large tree. The overall scene is set in a well-maintained area with greenery.









*A man to Thank... A man to Remember... A man to Honor*

*Our legendary founder*

# **PROF. N. ANANTHACHAR**





# OUR WINGS OF INSTITUTIONS

